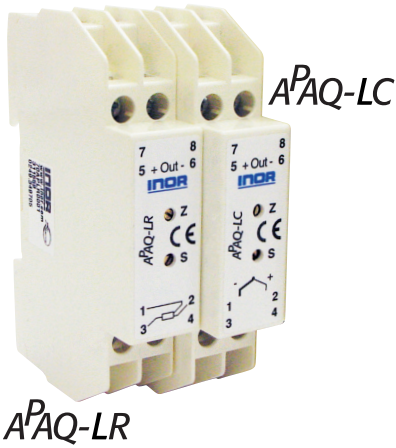


APAQ-L

Analog Adjustable 2-wire Transmitters



APAQ-LR



APAQ-LR is a multirange 2-wire temperature transmitter for Pt100 input. APAQ-LC is adjustable for 5 different thermocouple types. APAQ-LR/-LC are designed for highest reliability and excellent industrial performance.

- Rangeable with solderpads and potentiometers
- Temperature linear output for Pt100 (APAQ-LR)
- mV linear output for thermocouples (APAQ-LC)
- Consistent sensor break function

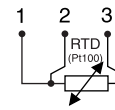
Specifications:

	APAQ-LR	APAQ-LC
Input	Pt100 ¹⁾ , 3-wire connection	T/C J, L, T, K, N
Sensor break	Upscale, Downscale	Upscale, Downscale
Adjustments		
Span	50/100/150/200/300/400/500 °C 100/200/300/400/600/800/1000 °F	10 to 50 mV continuously Temperature ranges acc. to datasheet
Fine adjustment	±10 %	±10 %
Zero	-50 to +50 °C -60 to +120 °F	±10 % of span
Output	4-20 mA	4-20 mA
Operating Temperature	-20 to +70 °C / -4 to +158 °F	-20 to +70 °C / -4 to +158 °F
Linearization	Temperature linear output	mV linear output
Galvanic isolation	No	No
Power Supply	6.5 to 32 VDC	6.5 to 32 VDC
Typical accuracy	±0.15 % of temperature span	±0.5 % to ±1.0 % of temperature span
Mounting	Rail acc. to DIN EN50022, 35 mm	Rail acc. to DIN EN50022, 35 mm

¹⁾IEC 60751, α=0.00385

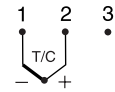
Input connections

APAQ-LR



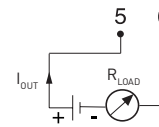
Pt100
3-wire connection

APAQ-LC

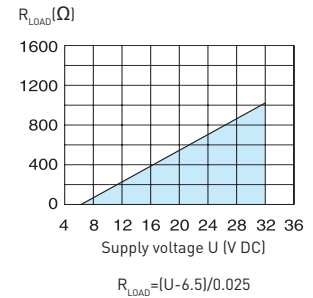


Thermocouple

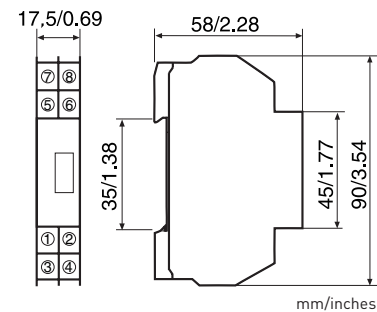
Output connections



Output load diagram



Dimensions



Ordering information

APAQ-LR	70APLR0001
APAQ-LC	70APLC0001
Configuration	70CAL00001